

FUNDAMENTAL OF DEFENCE STUDIES (NME)

UNIT - IV INDIA'S TRI-SERVICES :

* The INDIAN ARMED FORCES are the military forces of the Republic of India.

It consists of three professional uniformed services :

- * Indian Army
- * Indian Navy
- * Indian Air Force

The Indian Defence Forces - Introduction :

* Indian Defence Forces (IDF)

or Indian Armed Forces are same.

The Indian Armed Forces are under the management of the Ministry of Defence (MoD) of the Government of India.

It is the world's second - largest military force and has the world's largest volunteer army. Indian Defence Forces (IDF) was a part-time defence forces established as part of the Indian Army in 1917. IDF was generally unpopular among the British conscripts. It also has the third - largest defence budget in the world.

RANK STRUCTURE :

* Rank structure for the Indian Defence forces , they were

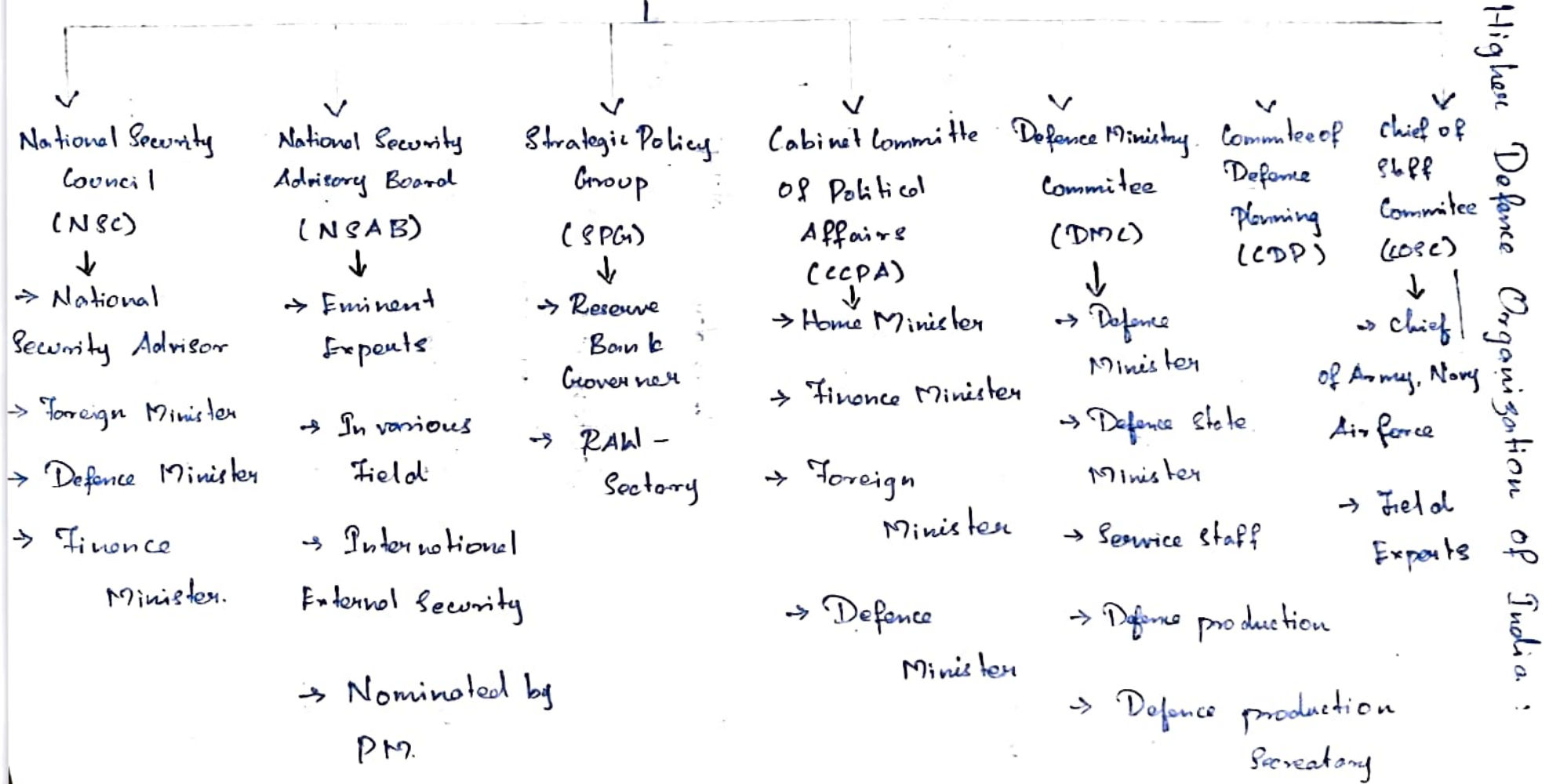
* Indian Army

* Indian Navy

* Indian Air Forces

INDIAN ARMY	INDIAN NAVY	INDIAN AIR FORCES
Field Marshal	Admiral of Fleet	Marshal of the Air Forces
General	Admiral	Air Chief Marshal
Lieutenant General	Vice Admiral	Air Marshal
Major General	Rear Admiral	Air Vice Marshal
Brigadier	Commodore	Air Commodore
Colonel	Captain	Group Captain
Lieutenant Colonel	Commander	Wing Commander
Major	Lieutenant Commander	Squadron Leader
Captain	Lieutenant	Flight Lieutenant
Lieutenant	Sub Lieutenant	Flying Officer

HDO



MoD → Ministry of Defence:

PC(S.C) → Supreme Commanding Armed Forces.



P.M



Home minister

External
Minister

Defence
Minister



- BSF → Border Security Force
- CRPF → Central Reserve Police Force
- CISF → Central Industrial Security Force
- CG → Coast Guard

Army, Navy,
Air forces

Paramilitary Forces.